

The Resource Centre for Public Sociology (RCPS)

in the *Department of Sociology, York University*

invites you to a presentation

22 October 2020, 11:30–1:00pm

Register by October 20 for the Zoom link

<https://www.eventbrite.com/e/rcps-talk-jfcrp-tickets-123522114971>

The Jane Finch Community Research Partnership

Learning about research ethics that start with community



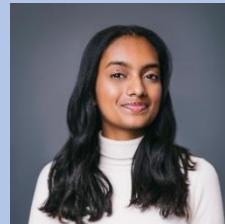
The Jane Finch Community Research Partnership (JFCRP) was created in 2016 as a result of ongoing engagement between members of the Jane Finch community and York University faculty and librarians. Our goal is to address the historical relationships that have existed and continue to exist between the Black Creek Jane Finch community, York University, and other academic institutions. Our work has been focused on creating a community procedure for reviewing and approving research in the Jane Finch community, establishing a Jane Finch Research Collection which makes research more accessible for Community members and developing resources for researchers looking to conduct research in the community.

Presenters:



Talisha Ramsaroop
Co-lead

Talisha has developed a unique approach which uses lived experiences and academic learnings to frame community building. To date, she has over 9 years of experience doing community engagement, ranging from project manager for a hyper-local grassroots youth agency, community planner for a large geographic community with Social Planning Toronto, and currently at York University as the Community Projects Coordinator in the TD-Community Engagement Centre. Talisha works on various projects and is currently the project-lead for the Jane Finch Community Research Partnership and Co-Founder of Lotus Toronto.



Shenali Don
Community Research
Coordinator

Shenali is a second-year student at York University majoring in communication studies and minoring in human resources management. She has worked and continues to work with several community organizations, currently being the Programs Manager of *The Flaunt It Movement* and one of two community research coordinators on the Jane-Finch Community Research Partnership.

Website: <https://resource-centre.soci.laps.yorku.ca/>

Facebook: www.facebook.com/groups/446889242919348/

YouTube: <https://www.youtube.com/channel/UCauILsziDOLtUTdWPt2qwKA>

Email: socrps@yorku.ca